

AXXAIR

MARCH 2022

THIN WALLED TUBES < 3mm WALL THICKNESSES

ORBITAL CUTTING AND FACING



ORBITAL WELDING





SPECIALIZED FABRICATION EQUIPMENT GROUP

Aidan Tagliaferro
- CEO and founder of AXXAIR -

AXXAIR

- designer, manufacturer and distributor -

AXXAIR supports its customers in more than 60 countries worldwide by offering global orbital cutting, squaring, bevelling and welding solutions.

We focus heavily on the needs of users and have adopted a service-oriented approach. We begin by determining the user's needs in terms of preparing items for welding and, of course, orbital welding itself.

We then provide the user's personnel with training on this equipment, in order to ensure that users are able to independently manage the applications they may need to use.

“

Understanding our customers and their needs, anticipating and meeting their expectations - these are AXXAIR's goals. We are able to respond to developments in our customers' ever-changing markets thanks to our various departments, R&D and Design Office.

AXXAIR offers **unique and original tube working solutions**. We believe that a lasting, high quality relationship with our customers is essential and have therefore developed local services to provide our customers with advice, by means of our subsidiaries and our distribution network.

AXXAIR is able to assist you at every stage of your project: creating samples, demonstrations, training, after-sales service, advice, etc.

”

Services and a team : - Join experience -

AXXAIR is your first point of contact for all tube working issues, from preparation to welding. With an experienced, responsive and committed team, AXXAIR will always suggest the most suitable solution.

“**Join experience**” sums up our philosophy, which is based on a community that always goes the extra mile.



Join experience

www.axxair.com



Global Process

AXXAIR has been designing, manufacturing and distributing its orbital tube working machines since 1997.



Our business is based upon the global tube working process: preparation (cutting, bevelling or squaring) and orbital welding.

Our overall product strategy allows us to offer innovative solutions and adopt a global approach to your tube and pipe-work projects.

A Worldwide presence

AXXAIR is established in areas where customer demand is high, in order to be able to provide a local, high-quality service, with ever faster turnaround times.

Our products are distributed in more than 60 countries by our network of subsidiaries (in Korea, the USA and Germany) and our “distributor” partners, all of whom have been trained on our premises. With a commercial strategy based on **innovation, quality and performance**, the AXXAIR Group, a family-owned company, has become a successful group, whose business is continually expanding both in France and on export markets.



Production

AXXAIR SAS is committed to maintaining industrial employment in France. To this end, 98% of manufacturing is carried out in the Rhone-Alpes region of France.

We sub-contract 100% of our production to partners, including machine shops, sheet metalworking sub-contractors, electronics specialists, etc.

We design all our machines in our in-house design office, which has an expert team.



Sustainable development

AXXAIR is committed to the sustainable development of industrial activities. As a part of our sustainable approach, we have decided to stop producing printed catalogues.

In today’s connected world, we believe that digital catalogues, with added features, are a practical and suitable alternative for everyone. We hope that you understand and will adopt this approach, for our good and the good of future generations.

This on-line catalogue can be printed, should you wish to do so, such that our vision is not imposed unilaterally. However, we would like to encourage you not to print it, or to only print out the information that is of greatest interest to you.





Transporting sensitive fluids

Many industries are using tubes to transport fluids. The more sensitive the more attention has to be paid to all connections that are most of the time welded: tube to tube or tube to T or tube to elbows for example. Most of those tubes are made of stainless steel in order to avoid corrosion and exchanges between the tube and the fluid.

Food-processing industry

Food and beverage manufacturing are using a lot of Stainless steel tubes. It is necessary of course to correctly seal the connections but also to be sure the internal surface of the tube is correctly welded (penetration).

The purpose is always to avoid any retention zones that could pollute the liquids you transport in the tube.

- Food processing
- Beverage processing: beer or wine manufacturing for example

Semi-conductor industry

The manufacturing of electronic components needs to have a very highly controlled atmosphere (clean rooms) as well as very high level quality tubes for the process.

Those tubes are transporting pure gases or pure water and to be welded with a very high quality.

An example is the manufacturing of memory.



Pharmaceutical industry

In this case the liquid that is transported is for producing medicine. In this case, even the inner surface of the tubes need to be electro polished to lower the possibility of interaction between liquid and tube surface.

As a consequence, the welds have to be with a very high quality of geometric aspects, in width, in surface finish. They are usually 100% X-rayed to guaranty the production will not be polluted.

Aeronautics industry

This industry is paying a lot of attention to weight and is therefore using a lot of aluminium components and almost all tubing is made with titanium tubes which is very light and resistant.

Welding titanium needs a very high gas protection inside and outside the tube.

Orbital closed head welding is the best solution for those applications.

- Aerospace
- Aircraft manufacturing



AXXAIR Orbital facing

AXXAIR
INNOVATIVE ORBITAL SOLUTIONS

Tube facing is used on thin tubes with a thickness of less than 3 mm. It consists in bringing into conformity the end of a tube or an accessory.

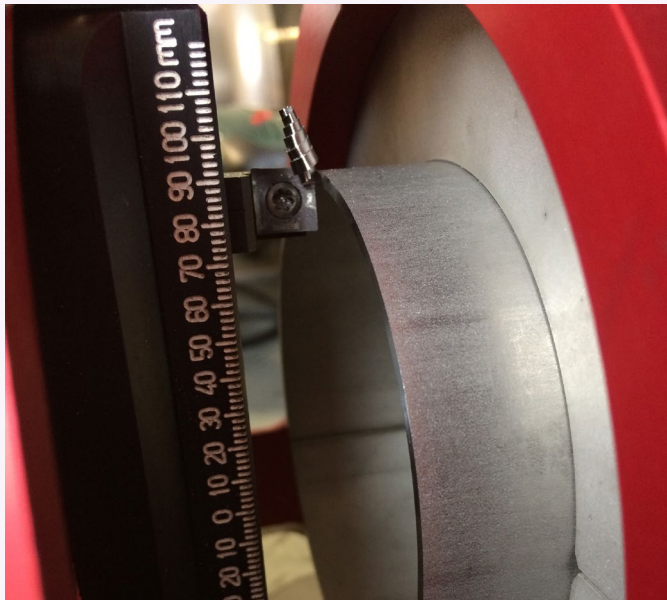
This conformity acts on three aspects:

the perpendicularity of the face of the tube -
the surface state of the face - potentially a length adjustment.

After the facing process, the face will be perpendicular to the axis of the tube, without burrs, with a low RA and the desired length.

Facing machines are used when the cutting process is not sufficiently precise for the application or when the cutting process generates burrs.

To give an exemple: abrasive cutting disc, band saw or tube cutter.



Tube with small diameters <math><25.4\text{ mm}</math> are particularly concerned by the facing process. They are often cut with tube cutters or abrasive cutting machines. Generally speaking, tube must be faced before welding in order to obtain quality welds.

One category of tube is particularly concerned: electro-polished tube used in semiconductor or pharmaceutical industries.

It is forbidden to scratch the polished surface inside the tubes: the cuts are therefore only done with a cutting wheel. This process does not generate chips but only dust. The result of this cut is not exploitable without a facing operation which unrolls the chip towards the outside of the tube.

FLEXIBILITY, PRODUCTIVITY

Our facing machines operate on battery or corded for more flexibility TIALN blades, reversible with two cutting edges guarantee optimal lifetime of consumables.

QUALITY

Facing creates a clean and bur-free surface without tube deformation: sharpness and accuracy guaranteed.

Thin tube are therefore ready for welding.

PORTABILITY

Our facing machines are lightweight and designed to be used on site as well as in the workshop.



Please do not hesitate to contact us for all enquiries relating to orbital facing technology.

We will be glad to share our know-how with you and find an adapted solution to your needs!



Join **experience**

www.axxair.com

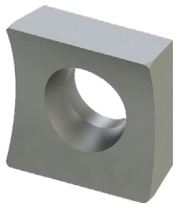


DC25 MA - DC65 MA

AXXAIR
INNOVATIVE ORBITAL SOLUTIONS

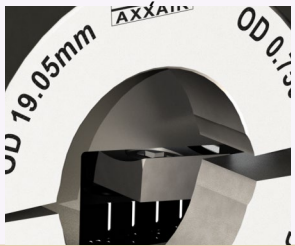
High quality blades

HSS TiAlN blade
Reversible,
two cutting edges



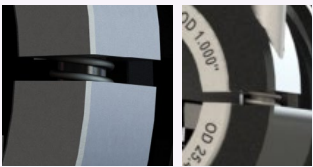
Clamping shells

Stainless steel
molded jaws



Easy adjustment

Indexable wrist and
wide opening with
spring

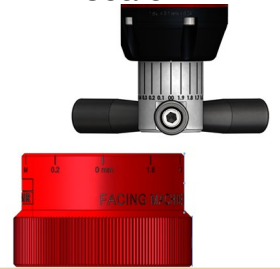


Brushless motor 18V

- 2 mechanical speeds + electric speed variator
- Special handy design
- Work without return shock
- Integrated work lamp
- Comes with two 5.2 AH battery, LiHD technology, maximum autonomy

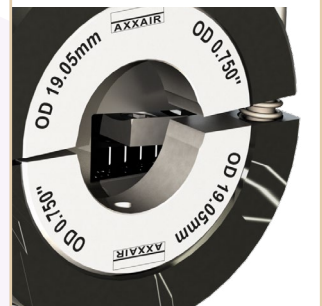
Accurate manual advance

Graduated vernier
scale



Easy set up of the tube

Large opening and
pivot clamping



Delivered in an anti-shock case

Water- and dustproof



Facing range

DC25-MA	ø3 - ø25.4 mm 0.1 - 1"
DC65-MA	ø3 - ø63.5 mm 0.1 - 2.5"

DC25 MA - DC65 MA

Technical characteristics:

Thickness < 3 mm (0,12") according to material

Burr-free tube squaring and edge breaking machine used after a band saw cut or on electro-polished tubes. Ideal tool to face a band saw cut before automatic welding

18 V Drill / Driver motor:

- 220-240 V ~ 50 / 60Hz or 100-120V ~ 60Hz
- High rotation torque
- Rugged reduction housing which allows heat dissipation and optimal durability
- Come with two 18V Li-Power, 5.2 Ah batteries and a fast battery charger
- 2 mechanical speeds + electric speed variator :

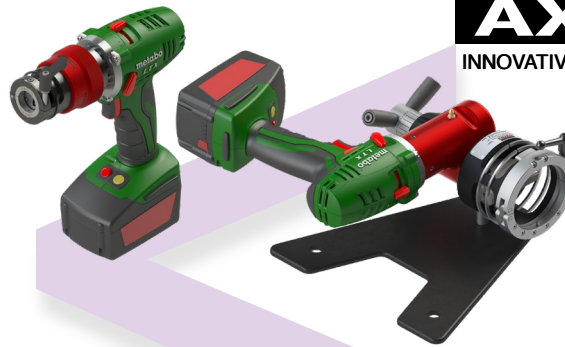
Speed 1 : 0-500 tr/min (rpm)

Speed 2 : 0-1700 tr/min (rpm)

All motors are supplied in their own individual cases, including the necessary tools

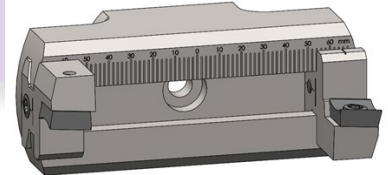
DC25

There are two mounting positions for the blade to cover the range of diameter.



DC65

Adjustment of the tool support by sliding: allows easy adjustment according to diameter and optimization of tool wear.



- 30° and 45° outside bevel possible with optional tool holder
- Facing and bevelling in one operation
- Possibility to use two tools simultaneously

DC65 : Flexible use



	Product Code	Facing machine for the following diameters (mm)	Net weight	Minimal straight length of tube	Dimensions (HxLxI in mm)
120 V Drill / Driver	DC25-MA1	Ø3 - Ø25.4 0.1 - 1"	2.5 kg	With standard jaws : 9mm (0.354") With micro-fit jaws : 5mm (0,196")	285 x 220 x 75
	DC65-MA1	Ø3 - Ø63.5 0.1 - 2.5"	5.5 kg	With standard jaws : 10mm (0,393")	140 x 325 x 250
230 V Drill / Driver	DC25-MA2	Ø3 - Ø25.4 0.1 - 1"	2.5 kg	With standard jaws : 9mm (0.354") With micro-fit jaws : 5mm (0,196")	285 x 220 x 75
	DC65-MA2	Ø3 - Ø63.5 0.1 - 2.5"	5.5 kg	With standard jaws : 10mm (0,393")	140 x 325 x 250

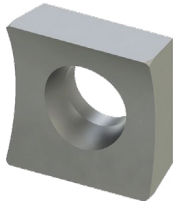


DC25 MS - DC65 MS

AXXAIR
INNOVATIVE ORBITAL SOLUTIONS

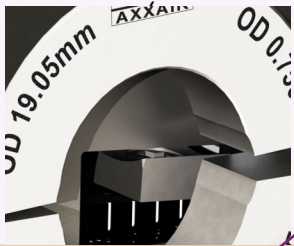
High quality blades

HSS TiAlN blade
Reversible,
two cutting edges



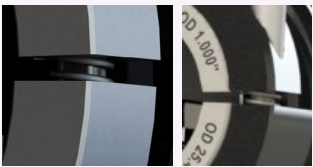
Clamping shells

Stainless steel
molded jaws



Easy adjustment

Indexable wrist and
wide opening with
spring



Mains motor, 1100 W

- 2 mechanical speeds + electric speed variator
- Special handy design
- Work without return shock
- Rugged reduction housing which allows heat dissipation and optimal durability

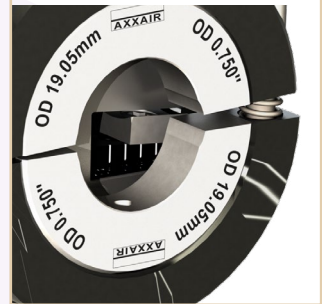
Accurate manual advance

Graduated vernier
scale



Easy set up of the tube

Large opening and
pivot clamping



Delivered in an anti-shock case

Water- and dustproof



Facing range

DC25-MS	ø3 - ø25.4 mm 0.1 - 1"
DC65-MS	ø3 - ø63.5 mm 0.1 - 2.5"

DC25 MS - DC65 MS

Technical characteristics:

Thickness < 3 mm (0,12") according to material

Burr-free tube squaring and edge breaking machine used after a band saw cut or on electro-polished tubes. Ideal tool to face a band saw cut before automatic welding

Mains motor 1100 W:

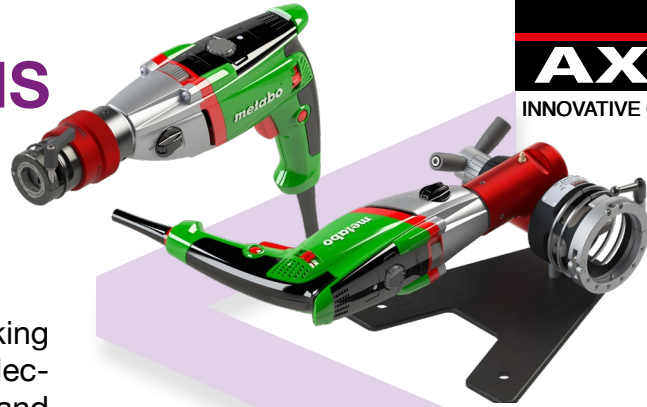
- 220-240 V ~ 50 / 60Hz or
- 100-120V ~ 60Hz
- High rotation torque
- Two speed gearbox with variable speed drive
- High quality speed controller
- Immobilizer protection
- Housing reducer in cast aluminium

- 2 mechanical speeds + electric speed variator :
Speed 1 : 0-1000 tr/min (rpm)
Speed 2 : 0-3100 tr/min (rpm)

All motors are supplied in their own individual cases, including the necessary tools

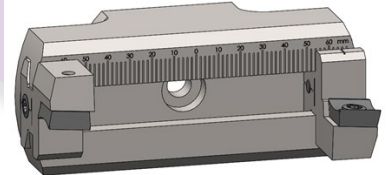
DC25

There are two mounting positions for the blade to cover the range of diameter.



DC65

Adjustment of the tool support by sliding: allows easy adjustment according to diameter and optimization of tool wear.



- 30° and 45° outside bevel possible with optional tool holder
- Facing and bevelling in one operation
- Possibility to use two tools simultaneously

DC65 : Flexible use

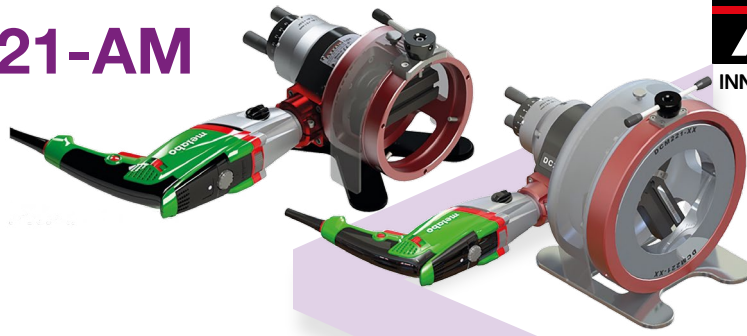


	Product Code	Facing machine for the following diameters (in mm)	Net weight	Minimal straight length of tube	Dimensions (HxLxI in mm)
1100W 120 V	DC25-MS1	Ø3 - Ø25.4 0.1 - 1"	2.5 kg	With standard jaws : 9mm (0.354") With micro-fit jaws : 5mm (0,196")	300x 370 x 76
Mains motor	DC65-MS1	Ø3 - Ø63.5 0.1 - 2.5"	5.5 kg	With standard jaws : 10mm (0,393")	132 x 345 x 340
1100W 230 V	DC25-MS2	Ø3 - Ø25.4 0.1 - 1"	2.5 kg	With standard jaws : 9mm (0.354") With micro-fit jaws : 5mm (0,196")	300x 370 x 76
Mains motor	DC65-MS2	Ø3 - Ø63.5 0.1 - 2.5"	5.5 kg	With standard jaws : 10mm (0,393")	132 x 345 x 340



DC115-AM - 221-AM

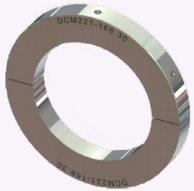
AXXAIR
INNOVATIVE ORBITAL SOLUTIONS



Clamping shells

DC115 : Stainless steel clamping jaws

DC221 : Aluminium clamping jaws



Accurate manual advance

0.1 mm steps (0,0393")

30° and 45° outside bevel

possible with optional tool holder

Easy set up of of tube

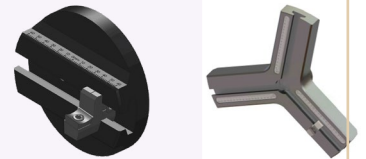
1 set of jaws for each diameter



Multi-tools

Possibility to use two (DC115) or three (DC221) tools simultaneously

Sliding adjustment of tool holder offers easy diameter change and optimal tip wearing



Delivered in a wooden box



1100 W motor

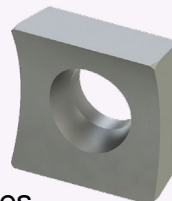
Motor mains 1100W with large speed range (2 gears)

Screw and wheel drive to optimize the speed range and eliminate vibrations

High quality blades

HSS TIALN blade.

Reversible, two cutting edges



Facing range

DC115 AM	ø12 - ø115 mm 0.5" - 4.5"
DC221 AM	ø50 - ø220 mm 2" - 8.5"

DC115-AM - 221-AM

AXXAIR
INNOVATIVE ORBITAL SOLUTIONS



Technical characteristics:

Thickness < 3 mm (0,12") according to material

Burr-free tube squaring and edge breaking machine used after a band saw cut or on electro-polished tubes. Ideal tool to face a band saw cut before automatic welding

- Accurate manual advance: 4/1000" (0,1 mm) step graduation
- Sliding adjustment of tool holder offers easy diameter change and optimal tip wearing
- 30° and 45° outside edge breaking possible with optional tool holder
- Squaring and edge breaking in one operation

- **Motor 1100W**, large speed range (2 gears): Screw and wheel drive to optimize the speed range and eliminate vibrations



All motors are supplied in their own individual cases, including the necessary tools

	Product Code	Facing machine for the following diameters (in mm)	Net weight	Minimal straight length of tube	Dimensions (HxLxI in mm)
120V Moteur 1100W	DC115-AM1	Ø12 - Ø115 0.5" - 4.5"	11 kg	28 mm 1.102"	219x314x462
	DC221-AM1	Ø50 - Ø220 2" - 8.5"	21 kg	39 mm 1.535"	327x425x540
230 V Moteur 1100W	DC 115-AM2	Ø12 - Ø115 0.5" - 4.5"	11 kg	28 mm 1.102"	219x314x462
	DC221- AM2	Ø50 - Ø220 2" - 8.5"	21 kg	39 mm 1.535"	327x425x540



Join **experience**

www.axxair.com



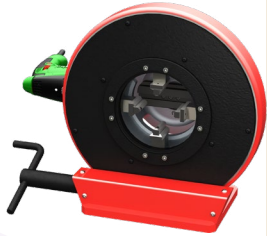
DC115-BM - 221-BM

AXXAIR
INNOVATIVE ORBITAL SOLUTIONS

Stainless steel concentric jaws

DC115 : 4 Stainless steel concentric jaws

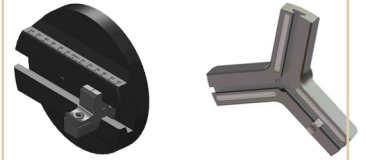
DC221 : 6 Stainless steel concentric jaws



Multi-tools

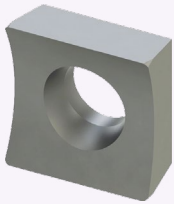
Possibility to use two (DC115) or three (DC221) tools simultaneously

Sliding adjustment of tool holder offers easy diameter change and optimal tip wearing



High quality blades

HSS TIALN blade
Reversible,
two cutting edges



30° and 45° outside bevel

possible with optional tool holder

Accurate manual advance

0.1 mm steps

Bench mounting option



1100 W motor

Mains motor 1100W with large speed range (2 gears)
Screw and wheel drive to optimize the speed range and eliminate vibrations

Delivered in a wooden box



Facing range

DC115 BM	ø12 - ø115 mm 0.5" - 4.5"
DC221 BM	ø50 - ø220 mm 2 - 8.5"

DC115-BM - 221-BM

AXXAIR
INNOVATIVE ORBITAL SOLUTIONS

Technical characteristics:

Thickness < 3 mm (0,12") according to material

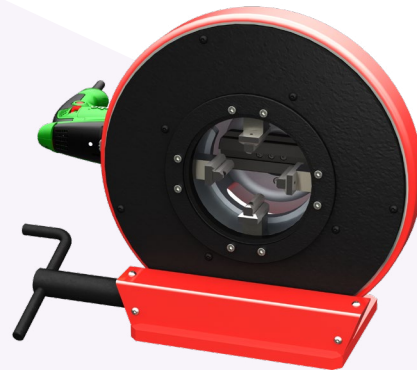
Burr-free tube squaring and edge breaking machine used after a band saw cut or on electro-polished tubes. Ideal tool to face a band saw cut before automatic welding

- Accurate manual advance: 4/1000" (0,1 mm) step graduation
- Sliding adjustment of tool holder offers easy diameter change and optimal tip wearing
- 30° and 45° outside bevel possible with optional tool holder
- Squaring and beveling in one operation
- Possibility to use two (DC115) or three (DC221) tools simultaneously
- Delivered in high quality protection case

All motors are supplied in their own individual cases, including the necessary tools



Wide range of use with stainless steel concentric clamping for all diameters



	Product Code	Facing machine for the following diameters (in mm)	Net weight	Minimal straight length of tube	Dimensions (HxLxI in mm)
120V Moteur 1100 W	DC115-BM1	Ø12 - Ø115 0.5" - 4.5"	37 kg	58 mm 2.283"	219x314x462
	DC221-BM1	Ø50 - Ø220 2" - 8.5"	55 kg	62 mm 2.440"	327x425x540
230 V Moteur 1100 W	DC 115-BM2	Ø12 - Ø115 0.5" - 4.5"	37 kg	58 mm 2.283"	219x314x462
	DC221- BM2	Ø50 - Ø220 2" - 8.5"	55 kg	62 mm 2.440"	327x425x540



Join **experience**

www.axxair.com



Orbital Facing - Accessories

AXXAIR

INNOVATIVE ORBITAL SOLUTIONS

Our support benches help you to position and feed your tubes without the aid of stands.

The height-adjustable table helps you easily and precisely set the height of your machine, for facing the tubes placed on the support bench.

The additional tube support bench allows you to position your longest tubes in a stable manner on all benches.



Product Code	Description	Net Weight	Dimensions (in cm)
CCBSB-X1	Height-adjustable tube support bench	57 kg	184 x 95 x 51
<u>Height-adjustable support bench, 1.5 m :</u>			
- stainless steel rollers		- min tube ø: 5 mm	
- height adjustment handle		- max tube ø: 321 mm	
- maximum load 350 kg uniformly distributed			

DC25-MA

DC65-MA

DC25-MS

DC65-MS

DC115-AM

DC221-AM

✓ DC115-BM

✓ DC221-BM



Product Code	Description	Net weight	Dimensions (in cm)
CCBSB-X2	Additional support bench	38 kg	150 x 95 x 51
<u>Additional tube support bench, 1.5 m :</u>			
- stainless steel rollers		- min tube ø: 5 mm	
- maximum load 350 kg uniformly distributed		- max tube ø: 321 mm	

DC25-MA

DC65-MA

DC25-MS

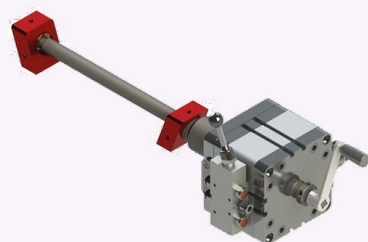
DC65-MS

DC115-AM

DC221-AM

✓ DC115-BM

✓ DC221-BM



Product Code	Description	Net weight	Dimensions (in cm)
CCSA21	Pneumatic clamping	8.2 kg	560 x 200 x 190
<u>Pneumatic clamping for DC115-BM / DC221-BM</u>			

DC25-MA

DC65-MA

DC25-MS

DC65-MS

DC115AM

DC221AM

✓ DC115BM

✓ DC221BM

Orbital Facing - Accessories

AXXAIR
 INNOVATIVE ORBITAL SOLUTIONS


Clamping jaws

Clamping jaws for orbital facing machines:

A set of jaws is necessary for each outside diameter of tube to be machined

For machine	Product Code	Diameter of the tube	
		mm	inch
DC25	DCM25-XX	3 mm à 25.4 mm	1/8" - 1"
DC65	DCM65-XX	3 mm à 63.5 mm	1/8" - 2.5"
DC115	DCM115-XXX	12 mm à 115 mm	1/2" - 4.5"
DC221	DCM221-XXX	50 mm à 220 mm	2" - 8.5"

✓ DC25-MA

✓ DC65-MA

✓ DC25-MS

✓ DC65-MS

✓ DC115-AM

✓ DC221-AM

DC115-BM

DC221-BM



Jaws for micro-fitting

Stainless steel micro-fitting jaws for DC25 ONLY

- Straight length : 4,3 mm mini

Product Code	Diameter of the tube	
	mm	inch
DCM25-MF03.18	3,18 mm	1/8 "
DCM25-MF06.00	6 mm	0.236"
DCM25-MF06.35	6.35mm	1/4 "
DCM25-MF08.00	8.00 mm	0.315 "
DCM25-MF10.00	10.00 mm	0.394 "
DCM25-MF12.00	12.00 mm	0.472 "
DCM25-MF12.70	12.7 mm	1/2 "

✓ DC25-MA

DC65-MS

✓ DC25-MA

DC65-MS

DC115-AM

DC221-AM

DC115-BM

DC221-BM

Orbital Facing - Accessories

AXXAIR

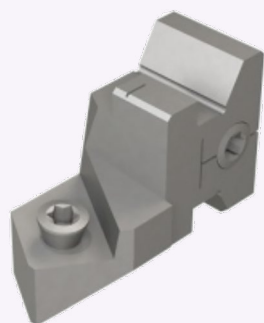
INNOVATIVE ORBITAL SOLUTIONS



Product Code	Description	Net weight	Dimensions (in mm)
DCM6525	Spacer	0.022 kg	Ø 76

Spacer for fitting DC25 jaws on a DC65

DC25-MA	✓ DC65-MA	DC25-MS	✓ DC65-MS	DC115-AM	DC221-AM	DC115-BM	DC221-BM
---------	-----------	---------	-----------	----------	----------	----------	----------



Product Code	Description	Net weight	Dimensions (in mm)
DC65-P300	Tool holder for beveling	0.028 kg	22 x 13 x 28.5

Tool holder for breaking the corner at 30° :

- Tool holders are supplied without blades
- Corner breaking is possible on the whole machine's range
- Possibility to face the tube and break the corner at the same time on the whole machines' ranges*

***exception for the DC65:**

- If facing and breaking corners at the same time: reduced range : 20 - 53 mm

DC25-MA	✓ DC65-MA	DC25-MS	✓ DC65-MS	✓ DC115-AM	✓ DC221-AM	✓ DC115-BM	✓ DC221-BM
---------	-----------	---------	-----------	------------	------------	------------	------------



Product Code	Description	Net weight	Dimensions (in mm)
DC65-P450	Tool holder for beveling	0.026 kg	22 x 12.5 x 28.5

Tool holder for breaking the corner at 45° :

- Tool holders are supplied without blades
- Corner breaking is possible on the whole machine's range
- Possibility to face the tube and break the corner at the same time on the whole machines' ranges*

***exception for the DC65:**

- If facing and breaking corners at the same time: reduced range : 20 - 53 mm

DC25-MA	✓ DC65-MA	DC25-MS	✓ DC65-MS	✓ DC115-AM	✓ DC221-AM	✓ DC115-BM	✓ DC221-BM
---------	-----------	---------	-----------	------------	------------	------------	------------

Orbital Facing - Consumables

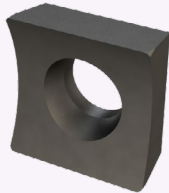
AXXAIR
INNOVATIVE ORBITAL SOLUTIONS

In order to fit the different types of tubes, applications and your organization's requirements, AXXAIR offers two inserts for orbital facing. Each insert has been developed for a specific application.

All of our inserts are double sided with two cutting edges and get a TiALN treatment, which improve the insert steadiness. This treatment ensures excellent heat resistance.

PERFORMANCE

HIGH PERFORMANCE



PERFORMANCE inserts for orbital facing

- Double sided inserts with two cutting edges, made of HSS-E, TiALN treatment
- Cutting angle adapted to high speed use or for hard materials

Product Code	Description	Net weight	Dimensions
DC-OUT1	Box of 10 inserts	0.028 kg	12.5 x 40 x 100 mm
DC-UOUT1	Single unit insert	0.002 kg	4 x 9.5 x 9.5 mm

✓ DC25-MA

✓ DC65-MA

✓ DC25-MS

✓ DC65-MS

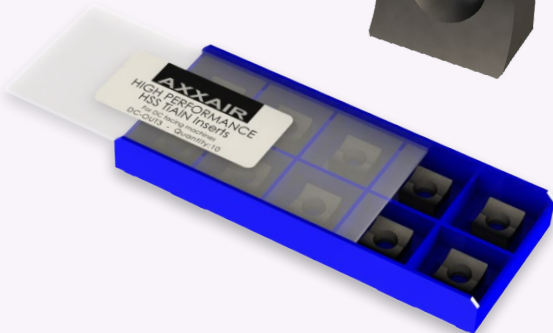
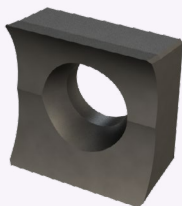
✓ DC115-AM

✓ DC221-AM

✓ DC115-BM

✓ DC221-BM

NEW



HIGH PERFORMANCE inserts for orbital facing

- Double sided inserts with two cutting edges, made of HSS, TiALN treatment
- Special design with acute cutting angle for high-purity applications without burr

Product Code	Description	Net weight	Dimensions
DC-OUT3	Box of 10 inserts	0.03 kg	12.5 x 40 x 100 mm
DC-UOUT3	Single unit insert	0.003 kg	4.5 x 9.5 x 9.5 mm

✓ DC25-MA

✓ DC65-MA

✓ DC25-MS

✓ DC65-MS

✓ DC115-AM

✓ DC221-AM

✓ DC115-BM

✓ DC221-BM



SPECIALIZED FABRICATION EQUIPMENT GROUP

Global Locations:



UNITED STATES HEAD OFFICE - HOUSTON

SPECIALIZED FABRICATION EQUIPMENT GROUP

4433 South Drive,
Houston,
Texas 77053, USA

Tel: +1 713 747 8502

E-mail: sales@sfe-brands.com

INTERNATIONAL HEAD OFFICE - FRANCE

SPECIALIZED FABRICATION EQUIPMENT GROUP

330B Route de Portes Les Valence,
ZI les Bosses,
26800 Etoile-sur-Rhône, France

Tel: + 33 (0) 475 575 070

E-mail: sales-int@sfe-brands.com

SFE UNITED KINGDOM

SPECIALIZED FABRICATION EQUIPMENT GROUP

Unit 15 & 16 Grendon Industrial Estate,
Grendon Underwood, Aylesbury,
Buckinghamshire, HP18 0QX England

Tel: +44 (0)1869 324 144

E-mail: sales-uk@sfe-brands.com

SFE GERMANY

SPECIALIZED FABRICATION EQUIPMENT GROUP

Ostmarkstrasse 15,
76437 Rastatt,
Germany

Tel: +49 (0)7222 9355100

E-mail: sales-germany@sfe-brands.com

SFE KINGDOM OF SAUDI ARABIA

SPECIALIZED FABRICATION EQUIPMENT GROUP

Warehouse No: EM16-10, Air Base Determinant,
Industrial supply scheme, Ash Shulah, Dammam
34264, Saudi Arabia

Tel: +966 50 515 8196

E-mail: sales-ksa@sfe-brands.com

SFE MIDDLE EAST

SPECIALIZED FABRICATION EQUIPMENT GROUP

Shams Freezone
Sharjah

United Arab Emirates

Tel: +971 (0)50 217 1376

E-mail: sales-me@sfe-brands.com

SFE INDIA

SPECIALIZED FABRICATION EQUIPMENT GROUP

Plot No. PAP 3, D 3 Block,
Chinchwad, Pune 411 019

Mob: +91 90 1102 4332

Mob: +91 95 5258 4361

E-mail: sales-india@sfe-brands.com

SFE LATIN AMERICA

SPECIALIZED FABRICATION EQUIPMENT GROUP

4433 South Drive,
Houston,
Texas 77053, USA

Tel: +1 713 747 8502

E-mail: sales-latam@sfe-brands.com

SFE SOUTH KOREA

SPECIALIZED FABRICATION EQUIPMENT GROUP

102 - 1301 Bucheon Technopark III
421 - 742 Gyeonggi-do-seoul, Taehan-min'guk
South Korea

Tel: +82 32 624 2870

E-mail: sales-asia@sfe-brands.com

SFE VIETNAM

SPECIALIZED FABRICATION EQUIPMENT GROUP

Emerald Block A, No.2, Road N4,
Son Ky Ward, Tan Phu District,
Ho Chi Minh, Vietnam

Tel: +84 91 951 70 18

E-mail: sales-vietnam@sfe-brands.com

SFE CHINA

SPECIALIZED FABRICATION EQUIPMENT GROUP

1208, 12F, #D 7001 Zhongchun RD
Minhang District
Shanghai, China

Tel: +86 215 429 1891

E-mail: sales-china@sfe-brands.com

Copyright © 2022 Specialized Fabrication Equipment Group, All rights reserved.

OUR BRANDS

